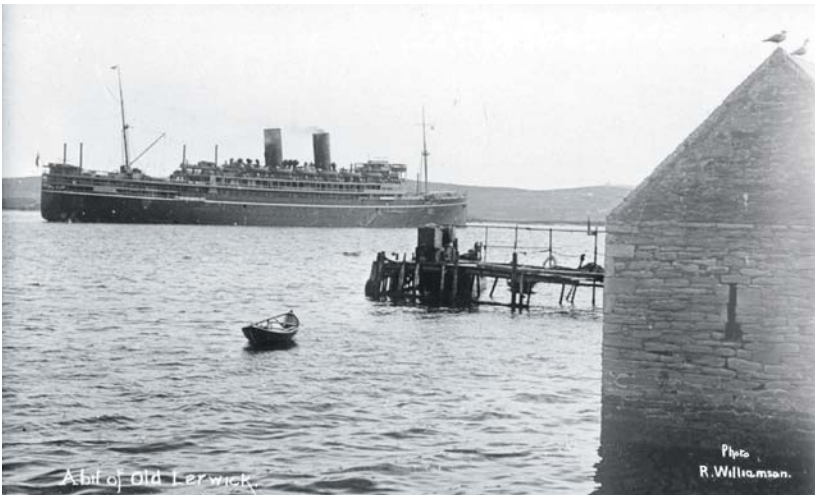




LERWICK CRUISING TO A DOUBLE CELEBRATION



The P & O cruise ship *Viceroy of India* at Lerwick in 1931. (Source: Shetland Museum Photographic Archive.)



The World alongside at Lerwick

Nautical milestones in 2008 and 2009

With huge growth since the 1990s in the popularity of Lerwick as a destination for cruise ships, the Shetland Islands port is on course for a double celebration. Next year will mark the 80th anniversary of the arrival of the first cruise vessel noted in the port's records, with the 1,000th expected to sail into the harbour in 2009.

Both occasions will be significant milestones in the development of Lerwick as a port-of-call for cruise ships and the port is already planning how to mark them – for example, by encouraging operators to include Lerwick in their 2009 itineraries, with the prospect of being the 1,000th cruise vessel to visit since port records began in 1924.

These include a first entry for cruise ships on 17 July 1928 when the 675 ton *Mira* arrived from Kirkwall, Orkney, with 112 members of the Old Norse Society of Bergen, Norway, on board, to tour Shetland before sailing later that day for Faroe and Iceland.

Lerwick Today

The steady growth in cruise ships calling at Lerwick accelerated in the 1990s and the port now averages up to 50 vessels and 25,000 passengers in a season.

At 60 degrees north, on a level with St Petersburg, in Russia, and Anchorage, Alaska, and at the crossroads of the North Atlantic and North Sea, Lerwick is Britain's "Top Port".

Cruise Ships up to 205m in length can berth alongside at the port and larger vessels are accommodated at anchor, with passengers just five minutes away by tender from a sheltered dock adjacent to the town centre. A large modern landing stage for use by tenders from the largest cruise ships anchoring in the harbour was introduced in 2006, improving the speed of transfer and providing a safe, dedicated area for assembly of cruise passengers.

Birthplace of cruising

Early cruise ship calls to Lerwick in the late 19th century included two visits by the M.V. *St. Sunniva* in 1894 on her way from cruises in the Norwegian fjords – as noted in local newspapers, *The Shetland News* and *The Shetland Times*.

It is perhaps fitting that the P & O-operated *St. Sunniva* was one of the earliest cruise callers to Lerwick which claims to be the birthplace of cruising. Arthur Anderson, the co-founder of P & O and credited with inventing cruising, was born locally at The Bød of Gremista, now preserved as a museum in his honour.



Arthur Anderson's birthplace, Bød of Gremista, Lerwick



Shetland Museum and Archives

Shore Attractions

Shetland is famous for its seabird colonies, marine life, beaches and cliffs, as well as its Scandinavian and Scottish heritage. A new visitor attraction, the Shetland Museum and Archives, opened in June 2007 on a stunning waterfront location in Lerwick. It includes thousands of artefacts, a three-storey high hall housing hanging boats, and a boat shed where boats are built and restored.

Shetland's many sites include two of the top archaeological attractions in Scotland - Mousa island, which boasts the country's best preserved Iron Age broch, and Jarlshof, with habitation recorded back over 5,000 years and one of the most remarkable excavations yet in Britain. The islands are also renowned for their Viking heritage.

Shore excursion specialists, Island Vista, continue to develop new experiences for the cruise market.



Up Helly A' Fire Festival

Tel: +44(0) 1595 696966 <http://www.islandvista.co.uk>

A warm & friendly welcome

A warm and friendly welcome awaits visitors to Lerwick. The local Tourist Information Centre provides an onboard Information Team service for visiting cruise ships which includes provision of information and advice on independent activities available to guests not taking part in pre-arranged shore excursions. A meet-and-greet service for cruise passengers by local guides in traditional costume and music – both Shetland fiddles and Scottish bagpipes are also available.

A local guide greets passengers



Port Facilities

Berthing

Berth Name	Depth	Max Length	Fresh Water	Distance from Town Centre
Holmsgarth No 5	9.2M	205M	Yes/50mt per hr	Approximately 1KM (shuttle bus available)
Victoria Pier (East)	6.8-9.2M	145M	Yes/50mt per hr	Directly adjacent
Victoria Pier (West)	6.0-8.4M	90M	Yes/50mt per hr	Directly adjacent

Pilot station:

Latitude: 60°07.'20 N. Longitude: 001° 08.'30 W

Towage:

Notice: 1 hr. Capacity 24 & 22 tonne BP.

Anchorage:

Anchorage in sheltered water, up to 50M.

Inner: 60° 09.' 34N. 01° 07.' 66W.

5 minutes from Albert Wharf Pontoon.

Outer: 60° 08.' 28N 01° 08.' 28W.

10 minutes from Albert Wharf Pontoon.

Tidal:

The small 1.7 metre tidal range facilitates transfer.

Pontoon:

Dedicated sheltered pontoon system at Albert Wharf in town centre with dual gangway system for cruise ships at anchor.

Ships Stores:

Excellent services by various local firms.



Waste:

Via ships agent.

Security:

Security services are available on request.

Lerwick Harbour is:-

A 24-hour all-weather port with two entrances. Note - tendering from anchorages is weather dependant.

Fully compliant with the International Ship and Port Facility Security Code (ISPS).

Approved by H.M. Revenue & Customs & H.M. Immigration.

General Information – Lerwick:

Coaches:

Modern coaches available through various local transport firms, coordinated through shore excursion agent. Maximum capacity of 500 passengers at any one time.

Taxis:

Plenty available - Taxi rank at Victoria Pier with taxis also available at Holmsgarth during cruise ship visits.

Banks:

Choice of four major UK banks within walking distance of Victoria Pier.

Currency Exchange:

Currency exchange available at Post Office and Tourist Information Centre in the town centre.

Shopping:

Good variety of shops in town centre.

Tourism:

Tourist Information Centre, Visit Shetland, Market Cross, Lerwick.

Tel: +44(0)1595 693434

<http://www.visitshetland.com>



A copy of the up-to-date list of cruise ships due to visit the port can be downloaded via the Port Authority website at- <http://www.lerwick-harbour.co.uk/pdfs/cruiseshiplist.pdf>