



# PERSONAL WATER CRAFT POLICY

**INDEX**

<b>1.</b>	<b>INTRODUCTION .....</b>	<b>3</b>
<b>2.</b>	<b>PERSONAL WATER CRAFT - DEFINITION .....</b>	<b>3</b>
<b>3.</b>	<b>RESPONSIBILITIES .....</b>	<b>3</b>
<b>4.</b>	<b>PENALTIES.....</b>	<b>3</b>
<b>5.</b>	<b>NAVIGATION RULES.....</b>	<b>4</b>
5.1	RIGHTS OF WAY.....	4
5.1.1	PART I – INTERPRETATION.....	4
5.1.2	PART II – NAVIGATION IN HARBOUR .....	4
5.2	VESSELS TO NAVIGATE WITH CARE.....	4
5.3	SPEED OF VESSELS .....	4
5.4	SMALL VESSELS NOT TO OBSTRUCT DEEP WATER CHANNEL.....	4
<b>6.</b>	<b>DESIGNATED PERSONAL WATER CRAFT AREAS.....</b>	<b>5</b>
<b>7.</b>	<b>WEATHER/WATER CONDITIONS .....</b>	<b>5</b>
<b>8.</b>	<b>COMMUNICATIONS.....</b>	<b>5</b>
<b>9.</b>	<b>ENVIRONMENTAL ISSUES.....</b>	<b>6</b>
<b>10.</b>	<b>RECOGNISED LAUNCH/RECOVERY SITES .....</b>	<b>6</b>
<b>11.</b>	<b>PLANS.....</b>	<b>6</b>

## 1. INTRODUCTION

Lerwick Port Authority was established (as Lerwick Harbour Trust) by Act of Parliament in 1877 and is an independent statutory body governed by its own legislation. It is directed by eleven Board Members, nine of whom are appointed from the local community and harbour users.

As a Trust Port, the harbour is operated commercially by the Port Authority which, although not publicly funded, is accountable to the wider Shetland community, as well as harbour users.

As the main commercial port for Shetland, the port is home to many commercial vessels such as the fishing fleet and ferries, is a port of call for cruise ships and also provides support for offshore oil and gas. Comprehensive, modern facilities serve a wide range of port users at Lerwick Harbour.

The Authority must ensure that the varying requirements of these vessels are met and that all transit the harbour safely and without incident, 24 hours a day, 365 days a year.

The Authority must also ensure the health and safety of employees and anybody else who may be affected by harbour activities. The Authority is committed to reducing the environmental impacts of harbour activities.

As a harbour authority, Lerwick Port Authority has an obligation to conserve and facilitate the safe use of the harbour, and a duty of care against loss caused by the Authority's negligence.

Any person operating a Personal Water Craft within Lerwick Harbour comes under the oversight of the Port Authority, and as a result is required to abide by the requirements laid out in this policy.

This document describes established good practice to ensure that you do not endanger yourself or others, or cause harm to the environment and wildlife.

Please follow the requirements of this policy and share this information and guidance with other Personal Water Craft users.

## 2. PERSONAL WATER CRAFT - DEFINITION

A Personal Water Craft is any vessel referred to as a jet ski, wet bike, water scooter, fun craft or other similar description which is designed to carry a person or persons standing, kneeling, sitting or prone upon the vessel and which vessel is propelled by a jet engine or other means of propulsion.

## 3. RESPONSIBILITIES

The user of a Personal Water Craft has a responsibility to themselves, any passenger(s) and to all other harbour users.

## 4. PENALTIES

Lerwick Port Authority Byelaws are enforceable and any person who contravenes or otherwise fails to comply with any of these byelaws or any condition, requirement or prohibition imposed by the harbourmaster in terms of these byelaws, shall be guilty of an offence and be liable, on conviction before a court of summary jurisdiction, to a fine not exceeding level three of the standard scale of fines referred to in section 289G of the Criminal Procedure (Scotland) Act 1975 as amended.

## **5. NAVIGATION RULES**

### **5.1 RIGHTS OF WAY**

#### **5.1.1 PART I – INTERPRETATION**

Lerwick Port Authority Byelaws 1989 states “Collision Regulations” means regulations for the prevention of collisions at sea made under Section 21 of the Merchant Shipping Act 1979 and any amending acts.

#### **5.1.2 PART II – NAVIGATION IN HARBOUR**

The Collision Regulations shall apply to vessels within the jurisdiction of the Authority, but subject to the other provisions of these byelaws.

#### **VESSEL MOVEMENTS**

The master of a seagoing vessel shall give prior notice to the harbourmaster of the vessel’s arrival at, departure from or movement within, the harbour.

### **5.2 VESSELS TO NAVIGATE WITH CARE**

The master shall navigate his vessel with such care and caution and at such speed and in such manner as not to endanger the lives of, or cause injury to persons, or damage to property and as not to interfere with the navigation, manoeuvring, loading or discharging of vessels or with moorings, river bank or other property.

### **5.3 SPEED OF VESSELS**

Except with the permission of the Harbourmaster and, subject to byelaw 7 and the Collision Regulations, the master of a vessel shall not cause or permit the vessel to proceed at a speed greater than 5 knots.

### **5.4 SMALL VESSELS NOT TO OBSTRUCT DEEP WATER CHANNEL**

The master of a small vessel whether under power or under sail which is not confined to a deep water channel shall not make use of that channel so as to cause obstruction to other vessels which can navigate only within that channel and shall give such vessels a clear passage and as wide a berth as safe navigation requires.

## 6. DESIGNATED PERSONAL WATER CRAFT AREAS

### Designated zones of operations are in four harbour areas:

(Refer to plans at the end of the document)

#### 1. Middle Harbour

North East of a line between North Ness Starboard Hand buoy Q G. and Maryfield Light Occ WRG. There is a limit to the south to keep clear of the Bressay ferry: a line between Gardie House and Victoria Pier vertical Green lights, Fixed G.

#### 2. Ham

East of a line between Cro of Ham and Holm of Mel.

#### 3. Breiwick

The head of Breiwick, inshore areas, limited on the East by the Knab and on the West by Skeo Taing.

Due to the small size, speed and manoeuvrability of PWCs the emphasis is on the user to move and keep out of the way of other vessels. Other vessels may not know the PWC user's intentions and vice-versa. Therefore PWC users should avoid passing ahead of larger vessels within 1 nautical mile, and otherwise maintain sufficient sea room of more than 200m between vessels.

## 7. WEATHER/WATER CONDITIONS

PWC users should be aware that weather conditions (and sea states) can be very changeable over short time periods within Lerwick Harbour.

This can create potential risks to users, including;

- Exposure including wind chill effect leading to hypothermia
- Capsizing of craft
- Collision leading to injury
- Poor Visibility leading to disorientation

## 8. COMMUNICATIONS

PWC users are required to register their name(s) with Lerwick Port Control.

Prior to any PWC activity contact should be made with Port Control via radio or telephone.

Telephone: 01595 692991

VHF channel 12

**Port Control MUST be informed when launching and recovering craft.**

## **9. ENVIRONMENTAL ISSUES**

Lerwick Port Authority takes its environmental responsibilities seriously and expects all users to do likewise.

The harbour is a natural haven for wildlife such as birds and sea mammals. Larger animals such as seals, porpoises, whales are often found in the harbour and care should be taken to ensure they are not harassed.

Refuelling of PWC must be undertaken in a safe manner to prevent pollution. Oil spills **MUST** be reported to Port Control immediately.

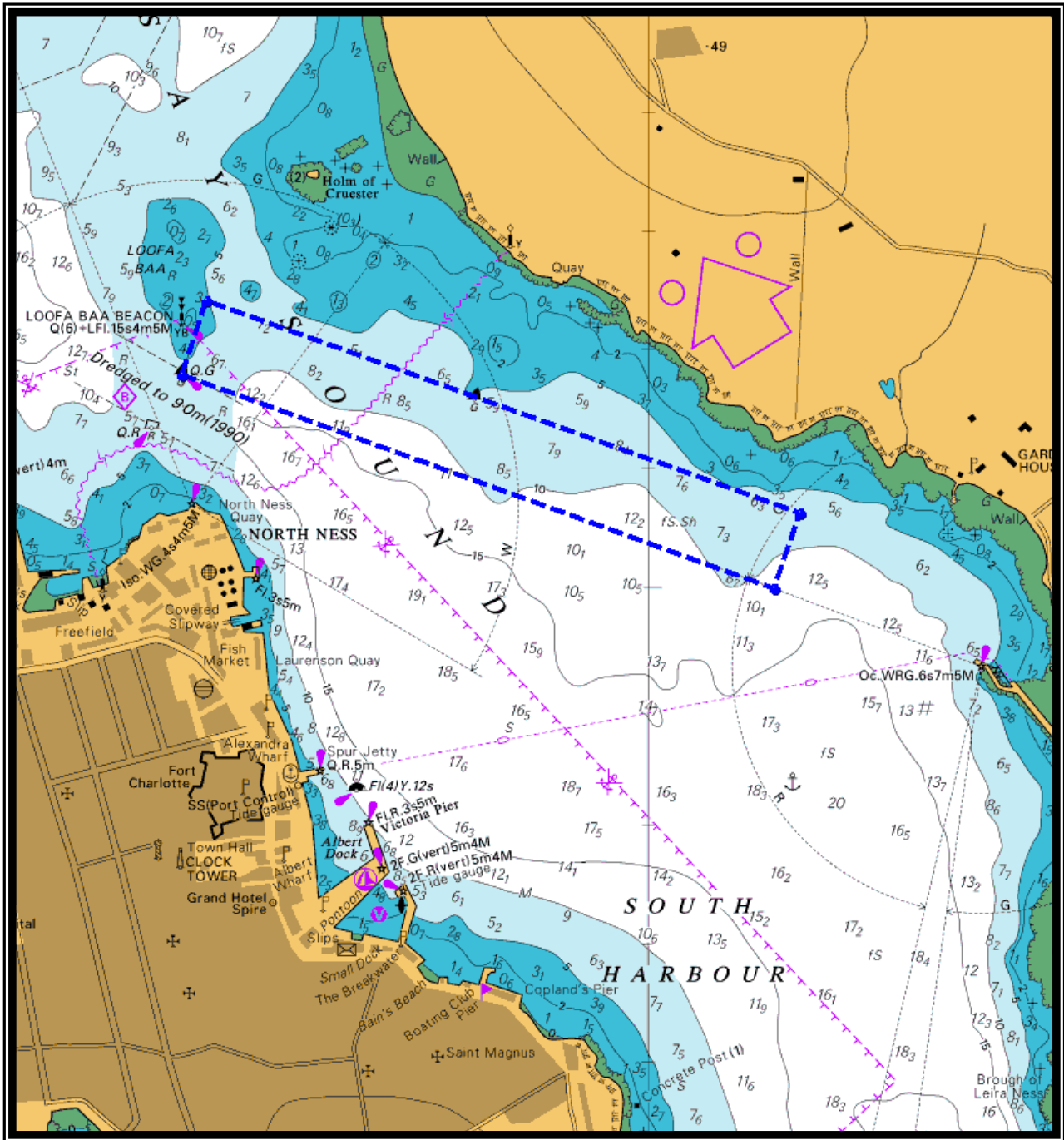
## **10. RECOGNISED LAUNCH/RECOVERY SITES**

- Bressay Marina
- Lodberries
- Small Dock – Bressay Slip
- Hays Dock
- West Dock
- Lerwick Marina
- Sletts

## **11. PLANS**

Approved PWC areas are bounded by the blue dashed line.

# Middle Harbour







# Breiwick

